



**FLORENT<sup>®</sup>**

D.no-1036-D



**TOP:- HEAVY DULL ORGANZA WITH HEVAY EMBROIDERY AND ZARKAN**  
**BOTTAM/INNER :- HEVAY SANTTON**  
**DUPATTA:- HEAVY DULL ORGANZA WITH HEVAY EMBROIDERY**





FLORENT®

D.no-1036-C



**TOP:-** HEAVY DULL ORGANZA WITH HEVAY EMBROIDERY AND ZARKAN  
**BOTTAM/INNER :-** HEVAY SANTTON  
**DUPATTA:-** HEAVY DULL ORGANZA WITH HEVAY EMBROIDERY



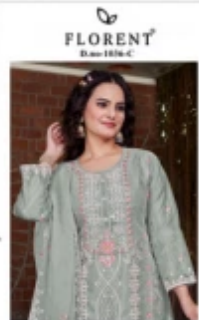
FLORENT<sup>®</sup>  
D.no-1036-A



**TOP:- HEAVY DULL ORGANZA WITH HEVAY EMBROIDERY AND ZARKAN**  
**BOTTAM/INNER :-HEVAY SANTTON**  
**DUPATTA:-HEAVY DULL ORGANZA WITH HEVAY EMBROIDERY**



**TOP:- HEAVY DULL ORGANZA WITH HEVAY EMBROIDERY AND ZARKAN**  
**BOTTAM/INNER :-HEVAY SANTTON**  
**DUPATTA:-HEAVY DULL ORGANZA WITH HEVAY EMBROIDERY**



**TOP:- HEAVY DULL ORGANZA WITH HEVAY EMBROIDERY AND ZARKAN**  
**BOTTAM/INNER :-HEVAY SANTTON**  
**DUPATTA:-HEAVY DULL ORGANZA WITH HEVAY EMBROIDERY**



**TOP:- HEAVY DULL ORGANZA WITH HEVAY EMBROIDERY AND ZARKAN**  
**BOTTAM/INNER :-HEVAY SANTTON**  
**DUPATTA:-HEAVY DULL ORGANZA WITH HEVAY EMBROIDERY**



