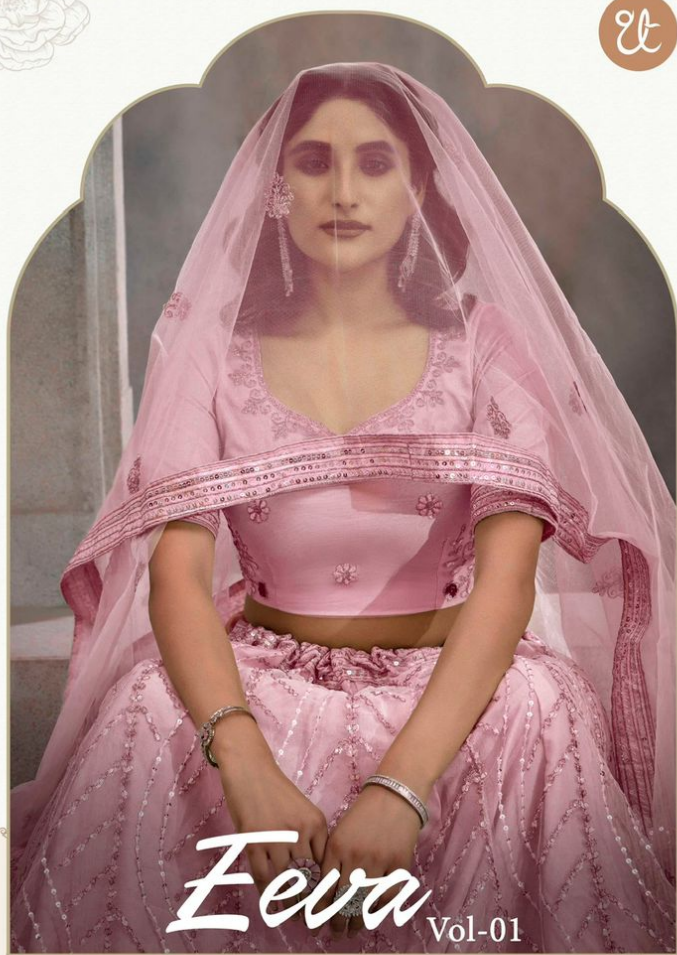




Et



Feva Vol-01

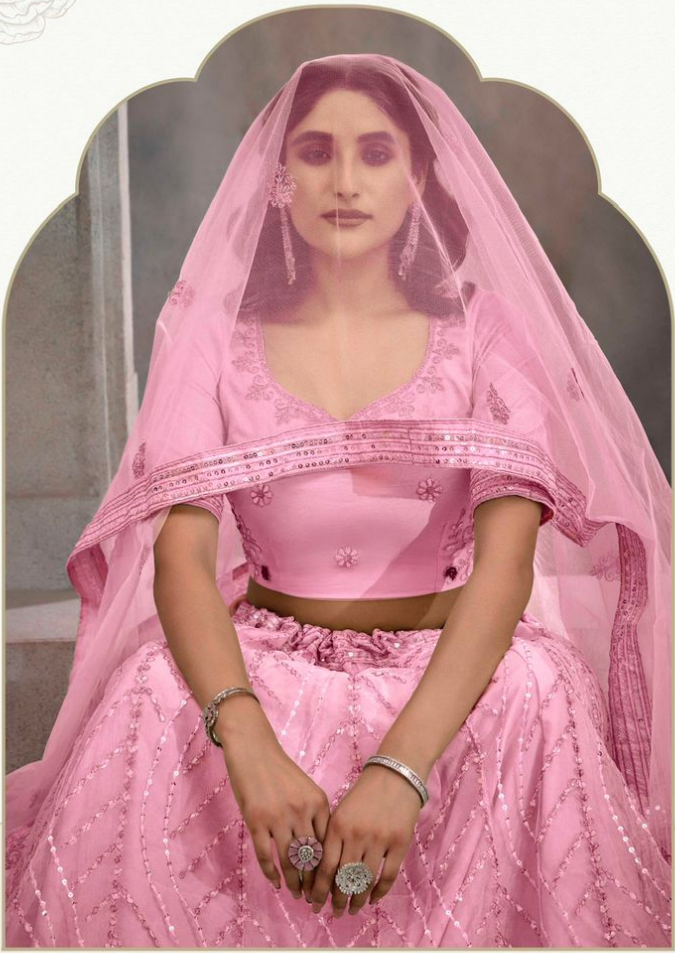


Et



1001 A





1001 B



1001 B





1001 A
— — — — —



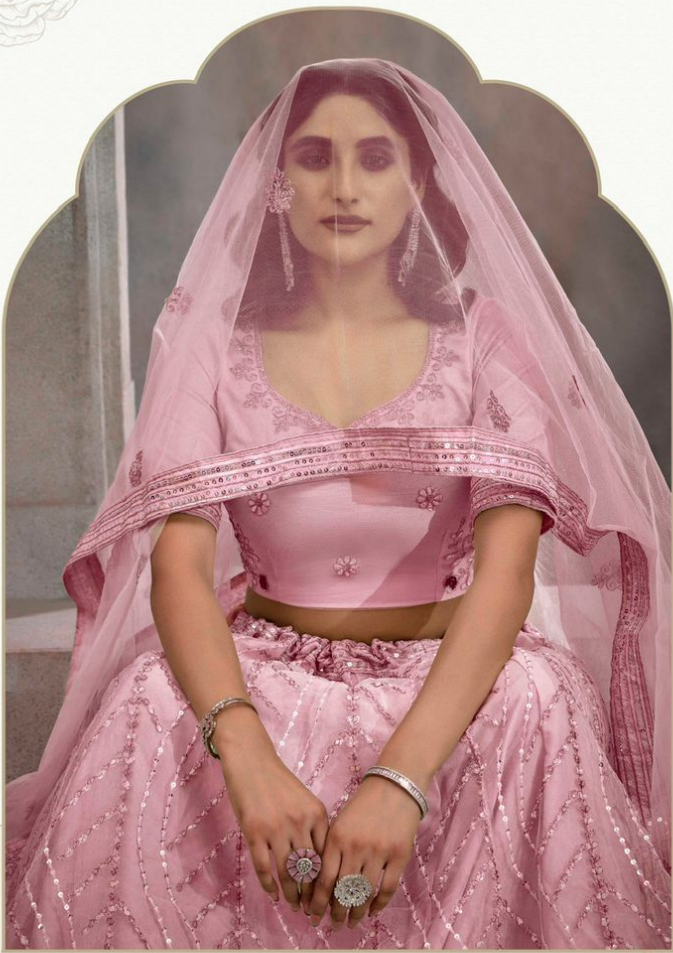
Et



Et



1001 C
— — — — —



1001 D



E



1001 C



E



Feva Vol-01



1001 A



1001 B



1001 C



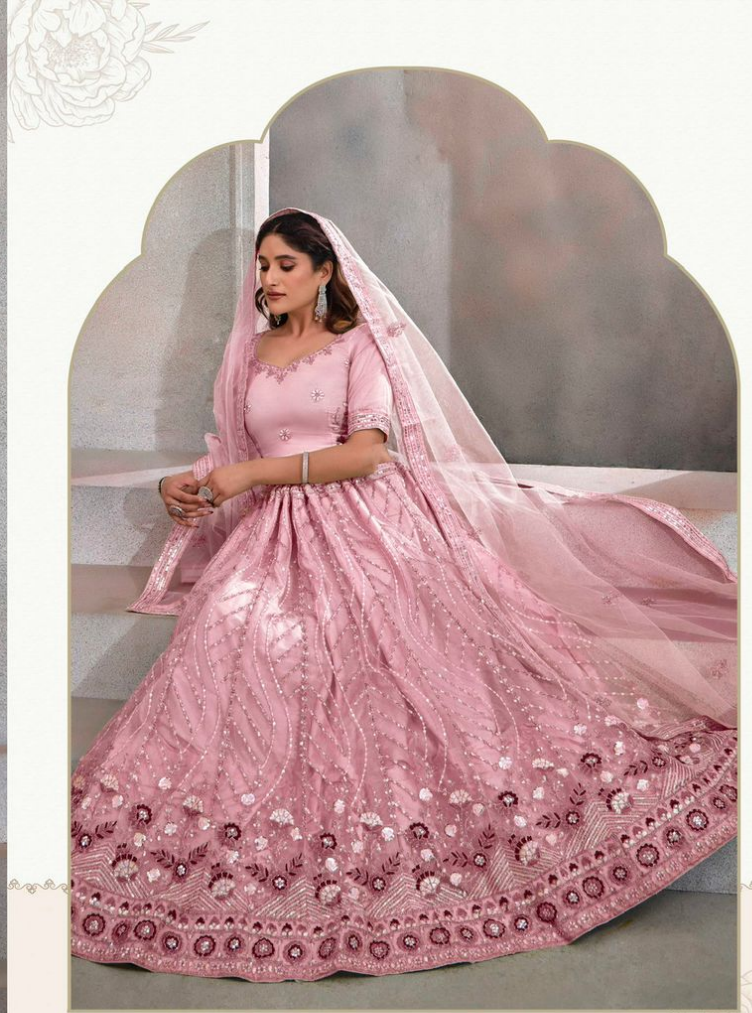
1001 D

THREAD THRILL

Feva Vol-01

Design NO. (SKU)	Main Color	Lehenga Fabric	Choli Fabric	Dupatta Fabric	Size (Semi-Stitched)	Lehenga & Choli	Dupatta Work	Choli Length MTR	Lehenga Length MTR	Dupatta Length MTR	Weight
1001-A	MINT GREEN	BUTTERFLY NET WITH SATIN INNER	BUTTERFLY NET WITH SATIN INNER	BUTTERFLY NET	UPTO 42 BUST AND WAIST	Thread With Sequince Embroidered Work	Thread With Sequince Embroidered Work	1 MTR	42 INCH	2.30 MTR	1.5 KG
1001-B	PARTY PINK	BUTTERFLY NET WITH SATIN INNER	BUTTERFLY NET WITH SATIN INNER	BUTTERFLY NET	UPTO 42 BUST AND WAIST	Thread With Sequince Embroidered Work	Thread With Sequince Embroidered Work	1 MTR	42 INCH	2.30 MTR	1.5 KG
1001-C	DARK PEACH	BUTTERFLY NET WITH SATIN INNER	BUTTERFLY NET WITH SATIN INNER	BUTTERFLY NET	UPTO 42 BUST AND WAIST	Thread With Sequince Embroidered Work	Thread With Sequince Embroidered Work	1 MTR	42 INCH	2.30 MTR	1.5 KG
1001-D	TURQUOISE	BUTTERFLY NET WITH SATIN INNER	BUTTERFLY NET WITH SATIN INNER	BUTTERFLY NET	UPTO 42 BUST AND WAIST	Thread With Sequince Embroidered Work	Thread With Sequince Embroidered Work	1 MTR	42 INCH	2.30 MTR	1.5 KG

Et



1001 D



Et



Feva

Vol-01