



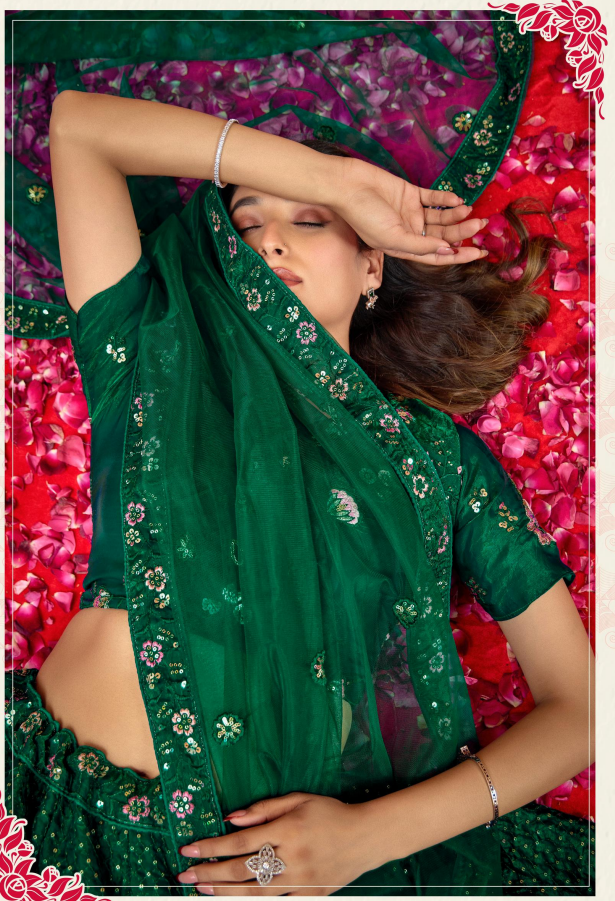
1003 A



1003 B



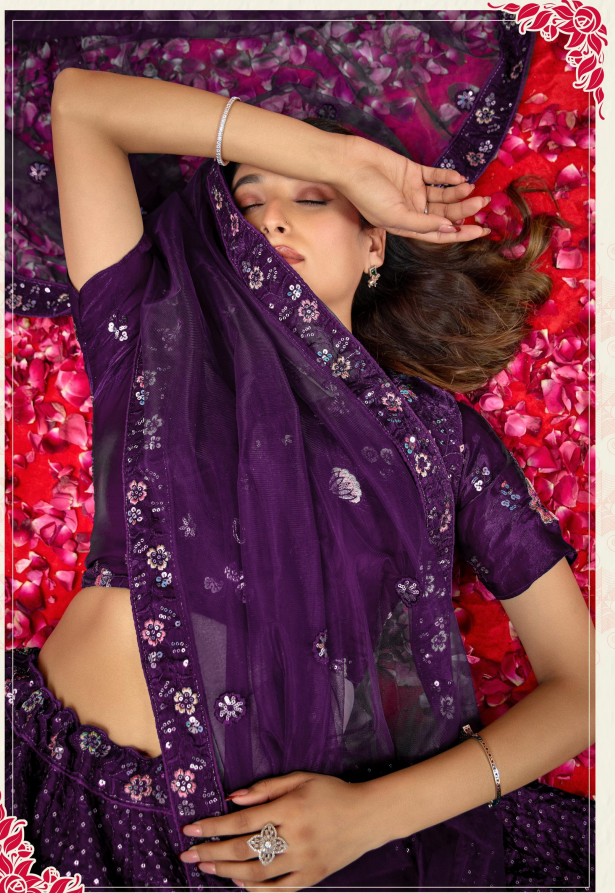
୧୮



1003 C



୧୯



1003 D

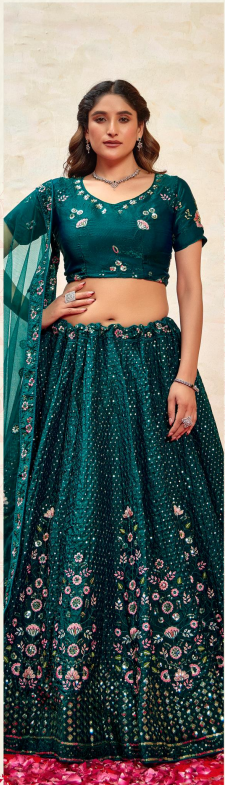




1003 E



Elegance
Vol-01



1003 A



1003 B



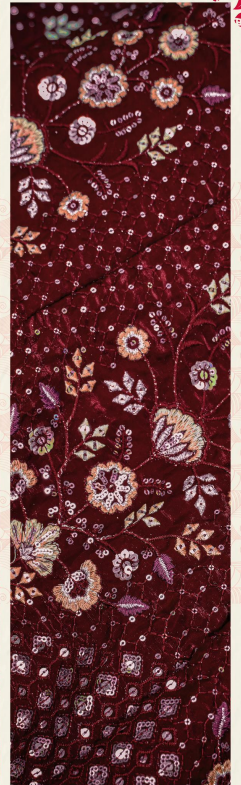
1003 C



1003 D



1003 E



Design NO. (SKU)	Main Color	Lehenga Fabric	Choli Fabric	Dupatta Fabric	Size (Semi-Stitched)	Lehenga & Choli	Dupatta Work	Choli Length MTR	Lehenga Length MTR	Dupatta Length MTR
1003-A	Teal Green	FENDI SILK WITH SATIN INNER	FENDI SILK WITH SATIN INNER	BUTTERFLY NET	UPTO 42 BUST AND WAIST	Thread With Sequince Embroidered Work	Thread With Sequince Embroidered Work	1 MTR	42 INCH	2.30 MTR
1003-B	Wine	FENDI SILK WITH SATIN INNER	FENDI SILK WITH SATIN INNER	BUTTERFLY NET	UPTO 42 BUST AND WAIST	Thread With Sequince Embroidered Work	Thread With Sequince Embroidered Work	1 MTR	42 INCH	2.30 MTR
1003-C	Green	FENDI SILK WITH SATIN INNER	FENDI SILK WITH SATIN INNER	BUTTERFLY NET	UPTO 42 BUST AND WAIST	Thread With Sequince Embroidered Work	Thread With Sequince Embroidered Work	1 MTR	42 INCH	2.30 MTR
1003-D	Deep Violet	FENDI SILK WITH SATIN INNER	FENDI SILK WITH SATIN INNER	BUTTERFLY NET	UPTO 42 BUST AND WAIST	Thread With Sequince Embroidered Work	Thread With Sequince Embroidered Work	1 MTR	42 INCH	2.30 MTR
1003-E	Maroon	FENDI SILK WITH SATIN INNER	FENDI SILK WITH SATIN INNER	BUTTERFLY NET	UPTO 42 BUST AND WAIST	Thread With Sequince Embroidered Work	Thread With Sequince Embroidered Work	1 MTR	42 INCH	2.30 MTR



Elegance
Vol-01